

seles par HENRI SELMER PARIS

Présence

The perfect match between richness and roundness of sound, with ease!

Henri SELMER Paris unveils, under the new brand **SeleS**, a never before seen clarinet called **Présence**.

Thanks to its innovative bore design, this clarinet has unique acoustic qualities that provide ease of emission, exceptional homogeneity and above all an instrument that is easy to play.

The sound of the **Présence** clarinet is a mix of harmonic richness, and timbre; essential characteristics to the instrument. Also, the research done on the position and size of the tone holes has given this clarinet unrivalled intonation. Specially designed keys, as well as new key orientations and positions, provide unmatched mechanical precision and response combined with player comfort. **Présence** clarinets are available in B-flat and A with two keywork finishes available: silver or nickel as an option.

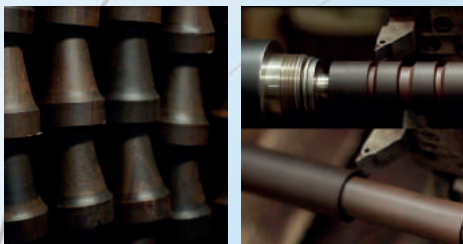
An E-flat lever is also available as an option.



Optional E-flat lever

- Key: B-flat and A
- Tuning: 440-442 Hz
- Barrel: 66,5 mm
- Keywork: silver-plated or nickel silver as an option
- Adjustable thumb rest
- Valentino pads
- Optional E-flat lever
- Henri SELMER Paris C85 120 mouthpiece
- Présence case

Présence



The grenadilla wood is selected, delicately worked, naturally treated, lacquered and waterproofed for a protection and finish at the top of its class.



This clarinet comes equipped with Valentino pads, preferred by many clarinetists and recommended by experienced repairers for their seal, stability and durability.



12th key



Présence clarinets are fitted in outfits including a Henri SELMER Paris C85 120 mouthpiece, a **Présence** case and a range of accessories.

Henri SELMER Paris ambassadors recommend **Présence**

Philippe BERROD

- Principal Clarinet with the Paris Orchestra
- Professor at the Paris CNSMD



*"The new **Présence** clarinet is an easy, luminous and round instrument. It comes from the work we have done on the homogeneity of the different registers, as well as the stability of intonation."*

Alessandro CARBONARE

- Principal Clarinet with the Santa Cecilia orchestra of Rome



*"The **Présence** clarinet is homogeneous and very easy to play. The low register is extraordinary, large and full. Above all it is very in tune!"*

Michael RUSINEK

- Principal Clarinet with the Pittsburgh Orchestra
- Professor at the Curtis Institute



"This clarinet immediately struck me as having an incredibly even sound, a warmth of tone, a beautiful intonation."

SeleS is a new brand created by Henri SELMER Paris respecting the values held by the SELMER family since the creation of the company in 1885.